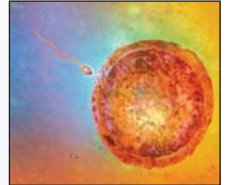


Patient's details: .....

**Non-Invasive diagnostic tests:**

- Nuchal translucency** (11th - 14th week)
- Biochemistry** Free-β HCG and PAPP-A
- Detailed organ scan**, including Echocardiography (19th - 22nd week)
- Doppler assessment** of placental perfusion and fetal blood circulation (Growth control and fetal well being >28th week)
- Cervical assessment** for the prediction of pre-term delivery (Specially for multiple gestations)
- Gynaecological scan** (Pelvic scan)
- Hystero-Salphingo-Contrast Sonography** (Tubal patency check)



**Invasive Diagnostic Tests:**

- Chorionic villus sampling** (Placental sampling for listing the chromosomes) between 11th - 14th week
- Amniocentesis** (Removal of the amniotic fluid for listing the chromosomes) > 15th week
- Cordocentesis** (Fetal blood sampling through the umbilical cord for listing the chromosomes) > 20th week



**Others:**

- Genetic counseling** includes two sittings
- Diabetes counseling** includes scan



Remarks: .....

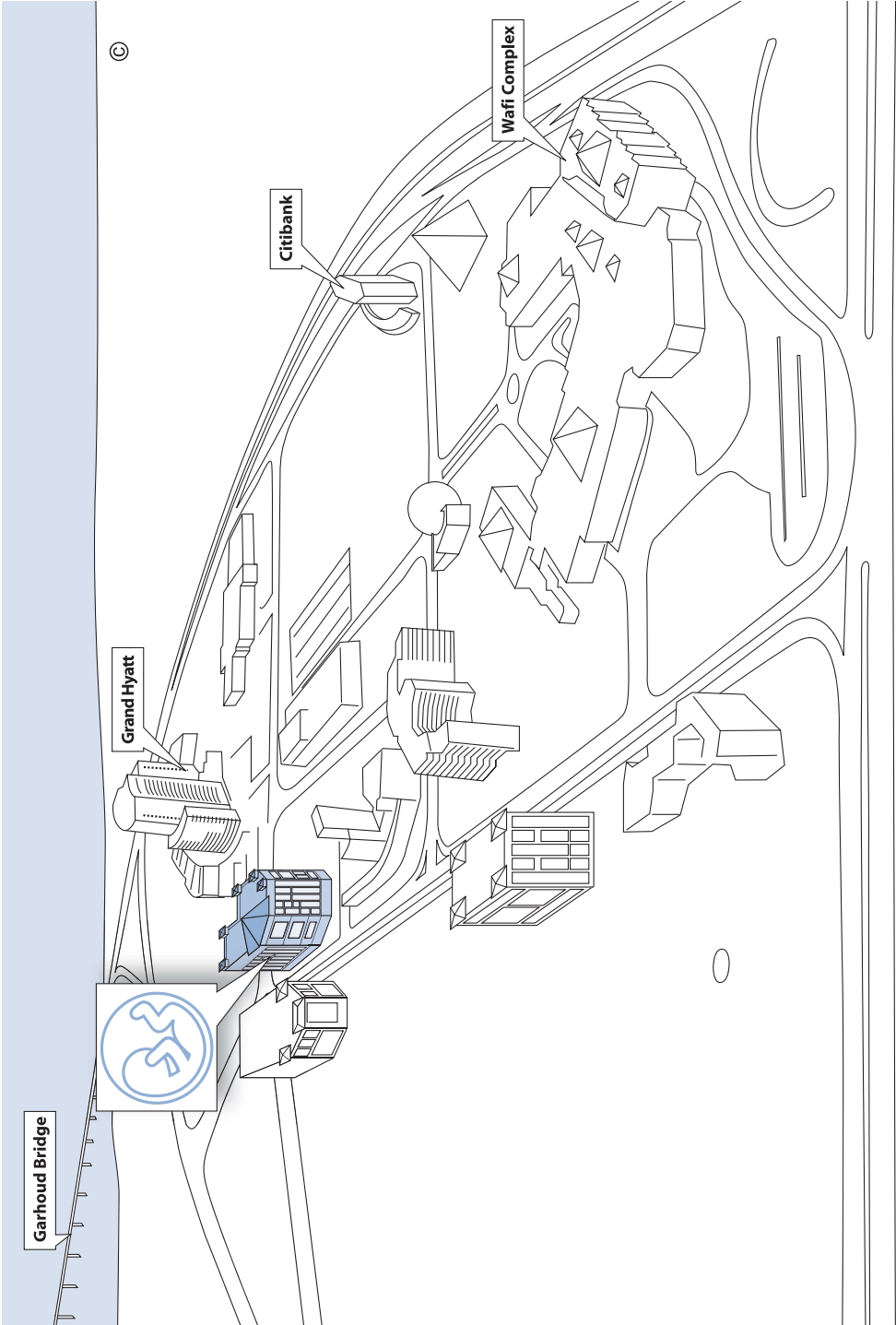
.....

.....

.....



Doctor's signature: .....



Garhoud Bridge

Grand Hyatt

Citibank

Wafi Complex



©